

2022/23

**BRENTWOOD  
COMMUNITY  
SAFETY  
PARTNERSHIP  
PLAN**

**2022 / 2023**



C S P

# CONTENTS

# PAGE

Welcome	3
Background	4
Local Profile	5
Police & Fire Plans	6
Our Team	7
The Baker Partnership HUB	8
Partnership Priorities	9
Safer Community	10
Safer Future	11
Highlights & Achievements	12
Young People Projects	13
Priority Action Plans	14-16
Contacts	17



The logo for Safer Brentwood features a stylized circular icon composed of four curved segments in red, blue, green, and yellow, arranged in a circle. 

safer  brentwood

[www.saferbrentwood.com](http://www.saferbrentwood.com)

# WELCOME to SAFER BRENTWOOD

Safer Brentwood is the local statutory Community Safety Partnership (CSP) for the Borough. The purpose of the partnership is to provide a strategic and collaborative approach to addressing local crime and disorder within the Borough, such as reducing the levels of crime including anti-social behaviour, the misuse of drugs and also reducing reoffending.

# THE BACKGROUND

Under the Crime & Disorder Act 1998, Community Safety Partnerships (CSPs) are required to work together in formulating and implementing strategies to tackle local crime and disorder, misuse of drugs, reduce reoffending in the area and to have in place a partnership plan setting out their priorities.

To ensure that the partnership is proactive and well informed, it carries out an annual Strategic Intelligence Assessment to review existing priorities in addition to identifying any new emerging priorities that the partnership should focus on.

The Partnership Plan takes forward the priorities identified by residents and data from the Strategic Intelligence Assessment and sets out how the partnership will work together over the next twelve months in order to tackle these priorities.

This plan also has regard to objectives set out in the Police, Fire and Crime Commissioners (PFCC) Police and Crime Plan, and will be shared with the PFCC.

The partnership is made up of both statutory and community organisations. Listed below are the five statutory partners that Brentwood works with.

- ✓ **Brentwood Borough Council**
- ✓ **Essex Police**
- ✓ **Essex County Fire & Rescue**
- ✓ **Essex Probation Service**
- ✓ **Health NHS**

Just as important as the statutory partners that we work with, are the non-statutory partners such as Neighbourhood Watch, Crimestoppers, Federation for Small Businesses, local resident groups, Parish Councils, schools, volunteers and more. Without these partners we wouldn't be able to work so effectively as a partnership.



## THE PARTNERSHIP PROMISE

Delivering for a Safer Brentwood  
for generations to come



# LOCAL PROFILE

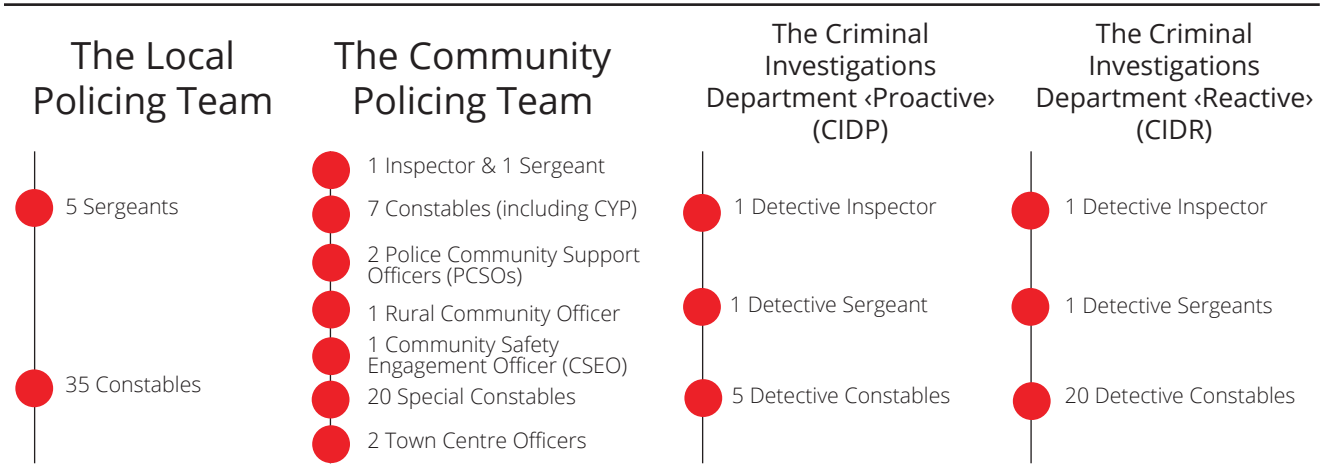
The Borough of Brentwood is situated in the South West of Essex and is a pleasant, busy town conveniently situated with routes into London, the surrounding countryside and villages. Brentwood has a good mix of shops, schools, businesses and recreational facilities. The Borough is located within the Metropolitan Green Belt, with the heart of the town only minutes away from woods, parks, commons and rights of way. Apart from its urban heart, the Borough of Brentwood has about 3,000 acres (about 1,215 hectares) of woodland, three country parks, a large amount of farmland and a number of very attractive villages within its borders, yet it is only 18 miles from London. Road and rail connections are excellent with the M25, A12 and A127 trunk roads within the borough and convenient, fast rail links with London and East Anglia. Stansted, City and Southend airports are all 30 to 40 minutes drive away, with Heathrow and Gatwick airports not much more.

# POLICING STRUCTURE

The Borough of Brentwood forms part of Essex Police West Local Policing Area (LPA), which includes the districts of Epping Forest, Harlow and Thurrock. The Borough accounts for 22% of the area and 17% of the population of the LPA.

Since November 2017, Essex Police moved into the Town Hall to their new base. This has further improved communication and partnership work with the Council. The Community Safety Team have access to the police station and have further developed their working relationships with local officers. Arrangements have also been made for the Council's fraud officers to use the facilities to carry out interviews under caution.

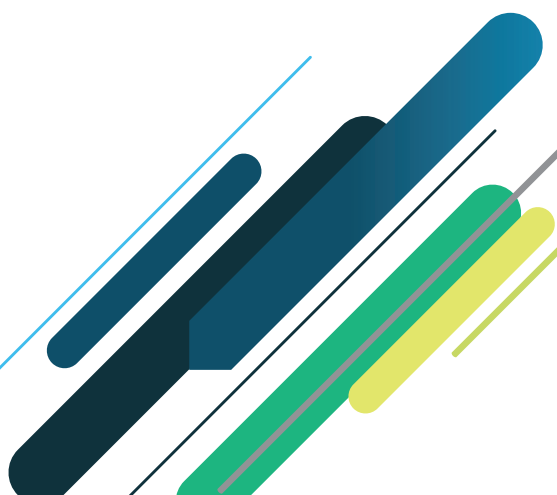
Essex Police's new base hosts the Community Policing Team (CPT), Local Policing Team (LPT), Criminal Investigations Department 'Proactive' (CIDP) and Criminal Investigations Department 'Reactive' (CIDR). Please see below some examples of how the teams are structured in Brentwood (please note that some of the roles cover out of borough areas as well)



As of 1st April 2022



Information taken from Essex Local Authority Portraits. A product of the Essex Joint Strategic Needs Assessment (JSNA)



## THE POLICE & CRIME PLAN 2021-24

The Police and Crime Plan sets out the policing priorities for the Police, Fire and Crime Commissioner. The plan brings together police, partners and the public of Essex to build safe and secure communities. The Community Safety priorities for Brentwood reflect on those set out in the Police and Crime Plan 2021-24.

Further investment in crime prevention	Preventing dog theft
Reducing drug driven violence	Preventing business crime, fraud and cyber crime
Protecting vulnerable people and breaking the cycle of domestic abuse	Improving safety on our roads
Reducing violence against women and girls	Encouraging volunteers and community support
Improving support for victims of crime	Supporting our officers and staff
Protecting rural and isolated areas	Increasing collaboration

## THE FIRE & RESCUE PLAN 2019-2024

The Fire and Rescue Plan sets out the priorities for fire and rescue services in Essex and a series of strong, tangible commitments to how we will help keep our communities safe. The plan brings together the Service, partners and the public to build safe and secure communities and offer efficient and effective prevention, protection and response activity.

Prevention, protection and response
Improve safety on our roads
Help the vulnerable to stay safe
Promote a positive culture in the workplace
Develop and broaden the roles and range of activities undertaken by the Service
Be transparent, open and accessible
Collaborate with our partners
Make best use of our resources

# OUR TEAM



**COUNCILLOR  
KEITH BARBER**

Councillor Barber is chair of Brentwood Community Safety Partnership. He is a Brentwood Borough councillor representing Hutton North ward.

In addition to being chair of Brentwood CSP he represents Brentwood Borough on the Essex Police, Fire & Crime Panel which works with the Police, Fire and Crime Commissioner for Essex.



**COMMUNITY  
SAFETY TEAM**

The Community Safety Team delivers a key role in co-ordinating the Community Safety Partnership, providing expertise in the development, implementation and monitoring of initiatives to help keep people safe who live, work and socialise in the Brentwood.

There are 4 members of the Community Safety Team in Brentwood.



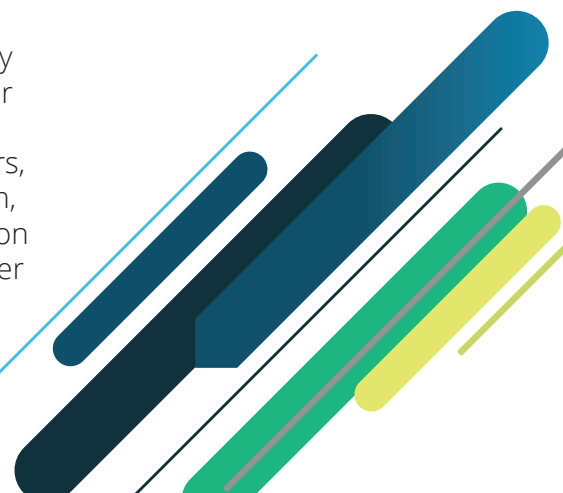
**DISTRICT COMMANDER  
PAUL BALLARD**

Chief Inspector Paul Ballard began his policing career in 2005 and has worked with in both the Brentwood and Epping Forest districts on a number of occasions during his service.

Paul is excited to be back in Brentwood and Epping Forest and is looking forward to continuing to build on the strong partner and community relationships that are in place.

## OUR COMMITMENT

Safer Brentwood is all about partnership working. The CSP believe strongly that communication with communities is key. There is a very active social media programme including the use of Twitter with over 720 followers, a dedicated website and a quarterly CSP Newsletter. The Newsletter is posted on our website and distributed to Members, Parish Councils, local businesses through the Neighbourhood Watch, local community groups, schools (who then forward the newsletter on to parents) and more. It is estimated that the newsletter reaches over 3000 readers.



# The Baker Partnership HUB

The Community Safety Partnership are proud to introduce the Baker Partnership HUB at Brentwood's Town Hall, which was opened by the Mayor of Brentwood and Chief Constable for Essex Police in March 2022

The HUB has been named the Baker Partnership HUB in memory of Police Officer Tris Baker who sadly lost his life last year and was the Children & Young Persons Officer for Brentwood & Epping. Funding for the HUB was received from the Community Safety Partnership and Police, Fire & Crime Commissioner which has resulted in the Council's Community Safety Team is now working alongside Essex Police and wider community safety partners such as Essex County Fire & Rescue Service, Essex Probation, Neighbourhood Watch, Crimestoppers, South Essex Parking Partnership, and Youth Services as well as many more.

The HUB will seek to improve communication, collaboration and intelligence sharing for the benefit of the borough's residents, businesses, and visitors.





# OUR PARTNERSHIP PRIORITIES

For 2022-23 the partnership is keen to balance our focus between what the figures tell us and what is important to local residents. We have considered past, current and emerging crime trends, taken account of the Police & Crime Plan 21-24 and the Fire & Rescue Plan 19-24 but most importantly we have aligned this with what local residents have told us through our engagement events. Taking all this into account we have chosen to focus our priorities areas on community and future, giving our priority areas for 2022-23:

safer community  
+  
safer future  
=  
safer  brentwood

We believe that the two key areas chosen will allow us to focus our work around key issues that have a detrimental effect on our communities and pose the biggest threat to a safer Brentwood.

"Brentwood Community Safety Partnership continues to make a huge difference in reducing Crime and Anti-Social Behaviour across the Borough. Our local community safety team work closely with Essex Police, Fire and other partners to deliver the strategic community safety priorities outlined in our plan. Brentwood CSP has and will continue to make a huge difference locally in protecting the safety of our local community here in Brentwood."

**COUNCILLOR KEITH BARBER**

# Our Partnership Focus for 2022-23

## SAFER COMMUNITY

Our Safer Communities priority is focused on those issues that have been identified by residents that matter most to them.

### Anti-Social Behaviour

Whilst there has been a reduction in the number of incidents, satisfaction levels as identified by Essex Police were reduced. We recognise that anti-social behaviour remains a concern for our local communities. Partners have worked hard to strengthen our work in the borough and with the establishment of the Council's Corporate Enforcement team working alongside Essex Police we have been able to focus on being much more visible. We will continue our work and develop innovative ways to tackle incidents through a collaborative and partnership approach. Ensuring that we keep residents informed and engaged.

### Engagement

This is an area that the partnership feel is vital in meeting all our objectives. We have a robust engagement programme which is delivered through strong partnership working. Last year we were able to deliver over 70 engagement opportunities covering a vast array of topics around the borough. The partnership is focused on keeping our communities at the heart of what we do and will continue to develop our engagement work in 2022/23.



### Fly-tipping

Fly-tipping is a blight on communities. It is usually unpleasant and costly to remove. The partnership will seek to work with local communities and partners to look at ways in which we can reduce the opportunity for those who intend on fly-tipping in the Borough. We will also aim to educate residents in terms of duty of care. Who are we giving our waste to? Do we know how they are disposing of it? Most importantly, do they have a Waste Carrier Licence?

### Road Safety

Road safety is extremely important to residents and an area where the partnership is keen to develop. We will work with communities and partners to increase the number of Community Speedwatch groups across the borough and continue to raise awareness of road safety in our communities.



# Our Partnership Focus for 2022-23

## SAFER FUTURE

The partnership believes that investing in our future is key for generations to come. We are no doubt in challenging times and we need to lay the foundations on which our young and most vulnerable can thrive and develop. Our Safer Future priority aims to address issues that threaten our communities and cause real concerns for residents.

### Crime Prevention

Crime prevention is at the centre of what the partnership believe is key to delivering a safer future for the borough. For 2022/23 we aim to focus our efforts on prevention of a number of key issues including knife crime, burglary, fly tipping, exploitation, and vehicle crime. Working with our partners to deliver Safer Brentwood Roadshows to all ages across the Borough and by increasing the number of engagement events every year, we are hoping to help some of the harder to reach areas and keep the community safe.

#### Drug & Alcohol Awareness

Drugs and alcohol remain a threat to future generations. The partnership is keen to develop our prevention work with young people on the dangers of drugs, including legal highs as well as the risks associated with alcohol.



#### Protecting the Vulnerable

The partnership has always sought to protect the most vulnerable in our communities. We will seek to strengthen our work around protecting the elderly, young people and those who experience issues such as Hate Crime, and Domestic Abuse improving knowledge and reducing the risks.

#### Exploitation

Exploitation covers a wide area and includes a whole raft of issues including the threat from gangs, grooming, sexual and criminal exploitation, and online exploitation. The partnership will focus on prevention in all the key areas affecting our most vulnerable. Working with the lead agencies, we will focus on educating professionals, parents and carers to spot the early signs, supporting them when required.



# HIGHLIGHTS AND ACHIEVEMENTS 21/22

## COMMUNITY ENGAGEMENT

Each year is a busy year for the partnership. One particular area which is important to us is community engagement. The partnership has continued to deliver a vast number of community engagement events across the borough and wider Essex covering many topics.

The partnership delivers over 70 engagement events a year which includes regular sessions in the local libraries, community hospital, and community halls.

These engagement sessions are delivered primarily by Peter Salmon, Brentwood's Neighbourhood Watch (NHW) co-ordinator. The aim is to provide crime prevention advice and give residents the opportunities to express their views on community safety issues.



Peter Salmon has been an integral part of Safer Brentwood and his efforts to keep Brentwood safe have won him a number of awards for his continued contribution to the community.

20+

Engagement Days

720+

Twitter Followers

4+

Themed Events



# YOUNG PEOPLE PROJECTS

Every year the partnership helps to fund and run projects with local schools. We work closely with the schools to identify key issues effecting young people and seek to commission appropriate projects and initiatives. The list below is just a small example of some of the projects we delivered last year.



- ✓ Chat 1st
- ✓ Brentwood Central Boxing Club
- ✓ Elite Leadership Development
- ✓ N-Act
- ✓ Outhouse East
- ✓ Evolve Intervention
- ✓ Outreach Work
- ✓ Kool Carers



### N-ACT

Drama performance called "FRIEND" – commissioned 7 performances from the YSG budget and CSP paid for 2 additional performances so 2 schools could have an extra performance.

This performance has been well received by secondary school pupils and staff. Play was focused around gangs and knife crime and was based on a true story from the Essex area.

Crimestoppers supported by offering all young people who watched the performance a fearless leaflet on how to report crim anonymously and in Brentwood approximately 2,051 students watched this performance.

Images taken from previous Safer Brentwood funded projects



### OUTREACH WORK

Essex Youth Service have delivered detached (street based) youth work sessions across Brentwood and recorded various engagements.

They have focused on key hotspots and worked in partnership with Brentwood CSP to identify these. Some of these hotspots include the Town Centre, open green spaces, Greenshar, Doddinghurst and Pilgrims Hatch.

Young people have been engaging with staff around a variety of issues including schools, exams, staying safe, mental health, exercise, dangers of NOS and promoting social distancing.

The team are currently developing some sports and physical activity sessions for young people aged 13-19.



### CHAT 1ST

Commissioned to develop the wellbeing hub, providing a safe space for young people to access mental health support from the Hermit Youth Centre.

### EVOLVE INTERVENTION

Commissioned to deliver building resilience courses to groups of 10 students at 3 Brentwood secondary schools.

### KOOL CARERS

Commissioned to deliver emergency first aid and emotional wellbeing sessions to young carers in Brentwood.



# ACTION PLAN 22/23

This action plan highlights some of the great ideas the partnership would like to focus on for the year 2022/23. Although these are not set in stone, they highlight areas in which we believe can be improved. With the global pandemic hindering the start of some of these projects, the partnership is still focused on delivering for the future.

Action Plan	
STRATEGIC OBJECTIVE	ACTION
To deliver themed community engagement events inline with our pre-published plan around the borough throughout the year	To improve and expand our engagement programme and attendance at events covering key issues such as: <ul style="list-style-type: none"> <li>• Crime Prevention</li> <li>• Drink Driving/Road Safety</li> <li>• Domestic Abuse</li> <li>• Personal Safety</li> <li>• Speeding</li> <li>• Property Marking</li> <li>• Senior Safety/elder abuse</li> <li>• Modern Slavery &amp; Human Trafficking</li> <li>• Hate Crime</li> <li>• Anti-Social Behaviour</li> <li>• Environmental Crime</li> <li>• Cyber Crime &amp; Internet Safety</li> <li>• Fly Tipping</li> </ul>
To provide more visibility and engagement opportunities across the borough focusing on hard to reach and rural areas	<ul style="list-style-type: none"> <li>• Support the development of the partnership roadshow trailer</li> <li>• To ensure regular patrols are undertaken utilising the Council's Corporate Enforcement team and enforcement vehicle</li> <li>• To increase joint patrols and operations across the borough.</li> <li>• To develop the enforcement vehicle for engagement opportunities such as leaflet racks etc</li> </ul>
Joint working to proactively tackle ASB in the Borough	<ul style="list-style-type: none"> <li>• To continue to work with partners through Community Safety Tasking (CST)</li> <li>• Managing hotspot areas through robust partnership working and using all available legislation to achieve a positive outcome</li> <li>• To work with Restorative Justice &amp; Community Justice Panels which includes residents, Essex Police, housing etc as well as the victim and perpetrator</li> </ul>

STRATEGIC OBJECTIVE	ACTION
To target those responsible for rural crime	<ul style="list-style-type: none"> <li>• To proactively tackle Fly tipping across the borough including using all tools available from warning letters, CPNs, FPNs and Court action</li> <li>• Joint unlicensed waste carrier patrols between Essex Police &amp; Council in conjunction with other planned activity</li> <li>• To use community payback offenders to work on projects as a way of repaying back to the community</li> <li>• To increase liaison with Parish Councils and local groups and identify measures to reduce the incidence of flytipping in hotspot areas</li> <li>• Increase publicity to keep communities informed and deter potential perpetrators</li> </ul>
To safeguard victims of Domestic Abuse (DA) from repeat incidents, by Identifying high risk victims and assessing their need for added security devices	Crime Prevention Tactical Advisor (CPTA) will visit all high-risk victims of DA and carry out a full home safety inspection providing additional security when required. Additional security measures will also be made available to all those who work with victims in Brentwood (i.e. IDVA's, WSW's, Police, Peabody – this is not an exhaustive list). This will enable an increased number of victims to be safeguarded from incidents of DA
To raise awareness of domestic abuse, child abuse, and elder abuse across the borough and to encourage reporting	To deliver various activities throughout Domestic Abuse Week focusing on raising awareness of Domestic Abuse
To protect the most vulnerable and elderly residents from becoming victims of crime including scams, internet, fire safety and more....	<ul style="list-style-type: none"> <li>• To enhance and continue delivery of the following successful projects:</li> <li>• Elderly Door Chain Project – to now include additional security to those in most need</li> <li>• Senior Safety Roadshow (SSR)– to expand and grow the number of roadshows across the Borough.</li> <li>• To raise awareness of bogus callers, scams and cyber crime</li> <li>• To continue to promote Keep Safe and its website</li> </ul>
To protect young people from Harm and raise awareness of issues affecting young people	<p>Deliver a targeted weekend event for schools, parents, carers and professionals providing advice, guidance and support on a number of key issues in relation to:</p> <ul style="list-style-type: none"> <li>• Prevent, Grooming, Sexual &amp; Criminal Exploitation, Healthy relationships, drugs &amp; alcohol, online safety, knife crime and gangs</li> <li>• Promote use of Crimestoppers Fearless programme within schools to support the above</li> </ul>
To support victims of Hate Crime	<ul style="list-style-type: none"> <li>• To support and promote the local Hate Incident Reporting Centre (HIRC)</li> <li>• To raise awareness of Hate Crime and support victims in signposting to relevant services</li> <li>• To provide training for Hate Crime Ambassadors</li> </ul>

STRATEGIC OBJECTIVE	ACTION
Reduce dwelling burglary's	<ul style="list-style-type: none"> <li>• Continue with Operation Insight in burglary hotspot areas to inform the local community</li> <li>• Identifying vulnerable areas through intelligence led policing</li> <li>• Strategic deployment of all available resources, including all community safety partners and the wider community</li> <li>• 'Super Cocooning' target hardening at premises which have been identified as vulnerable</li> <li>• To work with building control to provide information and advice to all development sites</li> <li>• To develop an awareness campaign which can be provided to estate agents and local traders</li> <li>• To deliver a Burglary Prevention Week to coincide with clocks going back</li> <li>• To develop an information leaflet to raise awareness of vehicle crime including posters and banners</li> </ul>
Supporting the most vulnerable victims of burglary	<ul style="list-style-type: none"> <li>• CPTA to carry out visits to repeat or vulnerable victims and to provide crime prevention advice/support to assist in target hardening.</li> <li>• To ensure appropriate cases are referred to Restorative Justice to assist with reducing the fear of crime</li> </ul>
To support action in respect of road safety	<ul style="list-style-type: none"> <li>• To continue to support, develop and improve Community Speedwatch across the borough</li> <li>• To undertake joint operations with key partners in hotspot areas</li> <li>• Raise awareness of road safety issue through one off events (drink driving, reporting incidents to Essex Police using dashcam footage, emergency vehicle access)</li> <li>• Increasing speed checks undertaken in the Borough through partnership with Essex Police</li> </ul>
To protect young people from serious youth violence	<p>To develop and commission diversionary activities, projects and initiatives for young people focusing on prevention, education and intervention on key areas:</p> <ul style="list-style-type: none"> <li>• Knife crime</li> <li>• Exploitation</li> <li>• Gangs</li> <li>• Drugs &amp; Alcohol</li> </ul>






## CONTACTS

### Our Partnership Promise

We are committed to delivering local solutions to local problems that have been identified by local people.

---

 [enquiries@brentwood.gov.uk](mailto:enquiries@brentwood.gov.uk)  
[jonathan.woodhams@brentwood.gov.uk](mailto:jonathan.woodhams@brentwood.gov.uk)

 [www.saferbrentwood.com](http://www.saferbrentwood.com)  
[twitter.com/saferbrentwood](https://twitter.com/saferbrentwood)

 Town Hall  
Brentwood  
CM15 8AY  
Published - July 2022